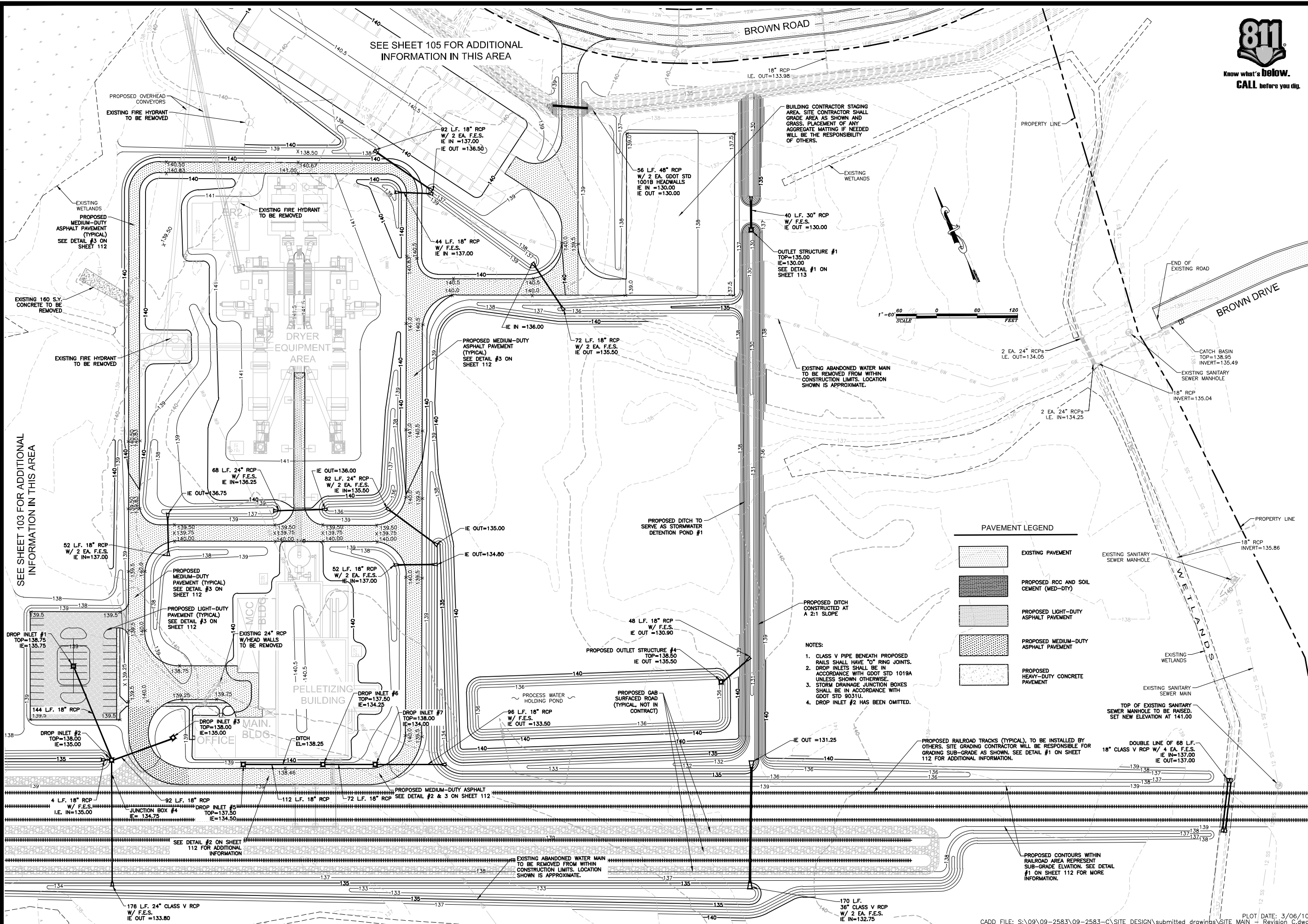


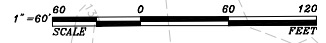


Know what's below.
CALL before you dig.



SEE SHEET 105 FOR ADDITIONAL INFORMATION IN THIS AREA

SEE SHEET 103 FOR ADDITIONAL INFORMATION IN THIS AREA



PAVEMENT LEGEND

- EXISTING PAVEMENT
- PROPOSED ROC AND SOIL CEMENT (MED-DTY)
- PROPOSED LIGHT-DUTY ASPHALT PAVEMENT
- PROPOSED MEDIUM-DUTY ASPHALT PAVEMENT
- PROPOSED HEAVY-DUTY CONCRETE PAVEMENT

- NOTES:
- CLASS V PIPE BENEATH PROPOSED RAILS SHALL HAVE "O" RING JOINTS.
 - DROP INLETS SHALL BE IN ACCORDANCE WITH GDOT STD 1019A UNLESS SHOWN OTHERWISE.
 - STORM DRAINAGE JUNCTION BOXES SHALL BE IN ACCORDANCE WITH GDOT STD 9031U.
 - DROP INLET #2 HAS BEEN OMITTED.

| REVISIONS | DESCRIPTION | Date | By |
|-----------|---|---------|----|
| A | ISSUED FOR BIDDING | 2/22/10 | SE |
| B | ISSUED FOR PERMITTING | 3/06/10 | SE |
| C | MULTI-REVISIONS ISSUED TO BUILDING CONTRACTOR | 3/12/10 | GE |

STATEWIDE ENGINEERING, INC.
ENGINEERS - SURVEYORS - PLANNERS
 516 EAST ASHLEY STREET, DOUGLAS, GEORGIA (912) 364-7723

Georgia Biomass LLC
 GRADING & DRAINAGE PLAN
 PELLETIZING & DRYER AREA
 01-60-C00 -104